

SP86-A



SP86-B



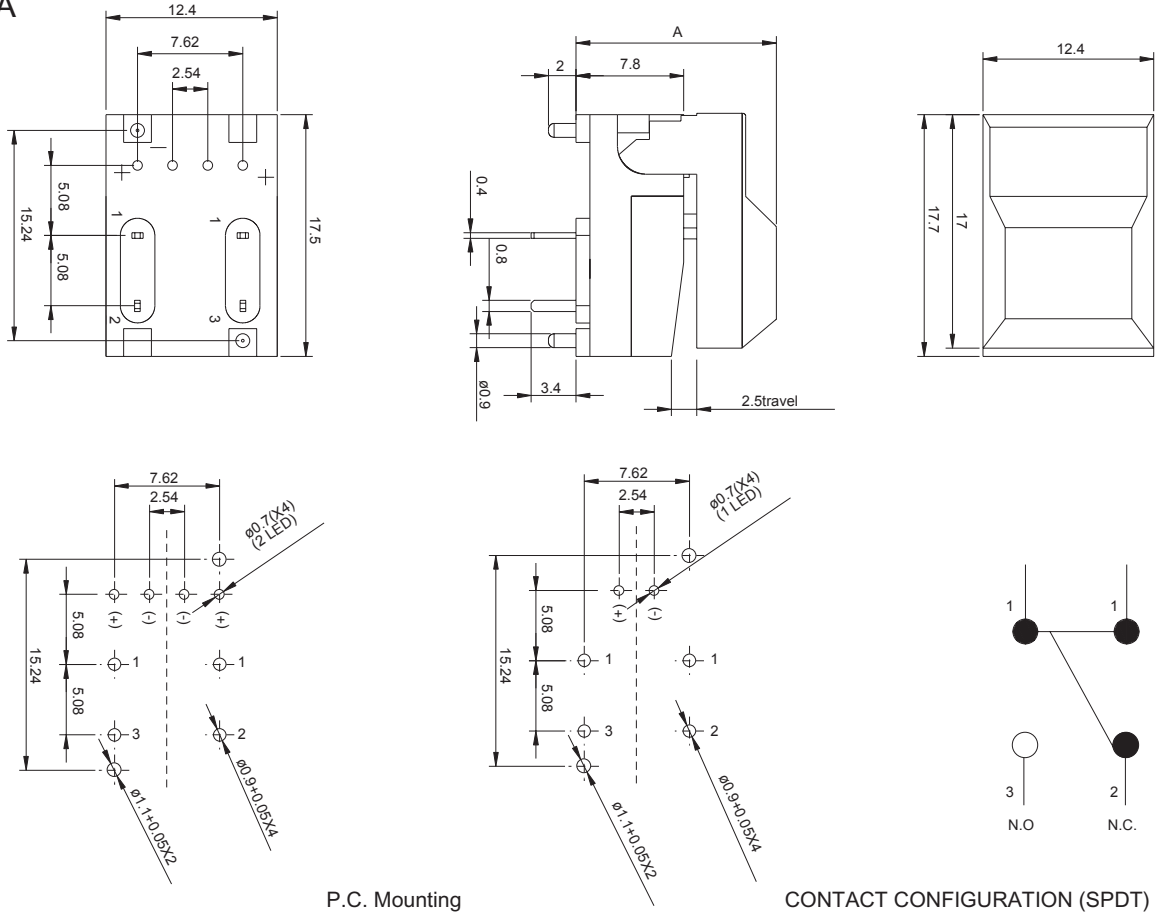
### SPECIFICATIONS

CIRCUIT: SPDT  
 CURRENT RATING: 12mA  
 VOLTAGE RATING: 24 VDC  
 TEST VOLTAGE: 150V  
 CONTACT RESISTANCE: 50 mΩ Max (initial)  
 INSULATION RESISTANCE: 100 MΩ min.  
 OPERATING FORCE: 200gf ± 50gf  
 TOTAL TRAVEL: 2.5mm ± 0.2mm  
 OPERATING LIFE: 500,000 cycles min.  
 SOLDER SPECIFICATION: 265° C for 5 seconds  
 FUNCTION: Momentary  
 OPERATING TEMPERATURE: +10° C ~ +60° C

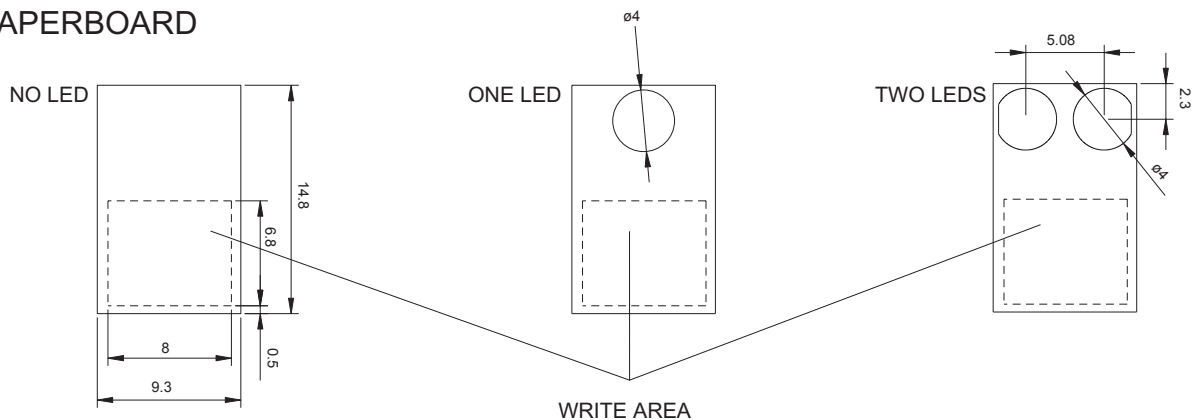
CAP COLOR	"A" DIMENSION
1~9	14.5
10	15.5

D  
20

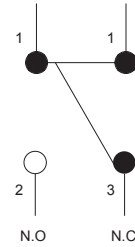
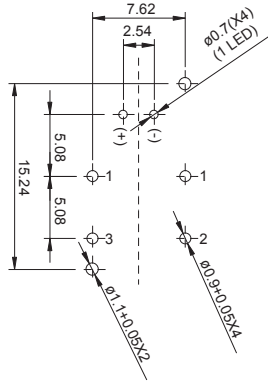
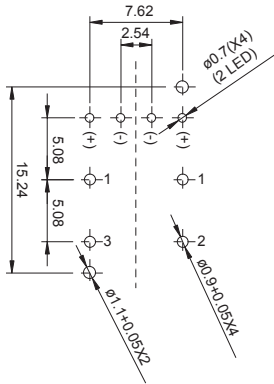
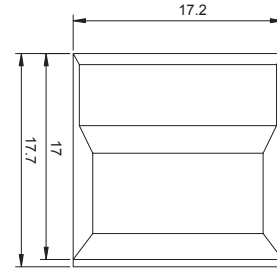
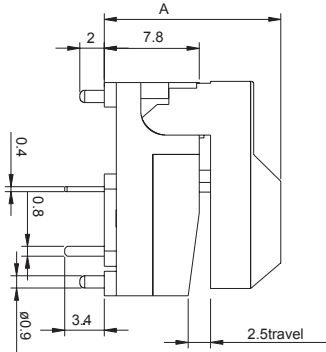
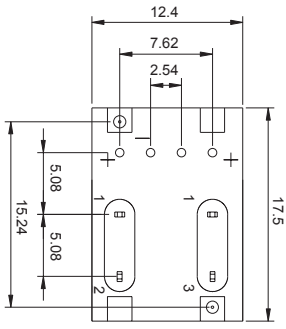
SP86-A



### PAPERBOARD



SP86-B

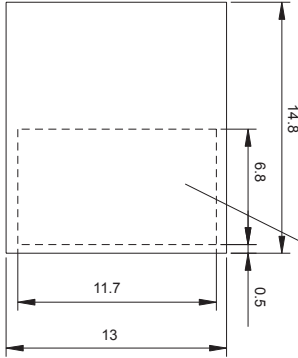


P.C. Mounting

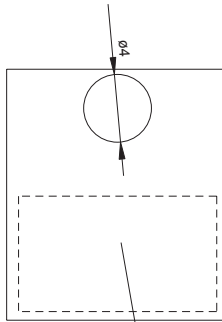
CONTACT CONFIGURATION (SPDT)

### PAPERBOARD

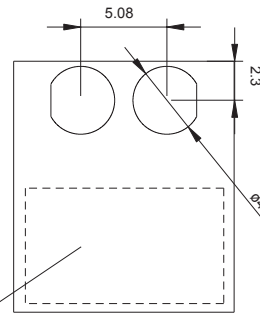
NO LED



ONE LED



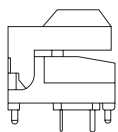
TWO LEDS



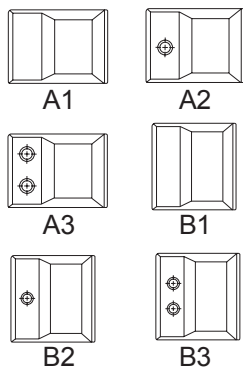
WRITE AREA

### HOW TO ORDER

S P 8 6



CAP STYLES



CAP COLORS

- 1 = RED
- 2 = YELLOW
- 3 = GREEN
- 4 = WHITE
- 5 = BLACK
- 6 = ORANGE
- 7 = BLUE
- 9 = GREY
- 10 = TRANSPARENT

LED COLORS

- 0 = Without LED
- 1 = RED
- 2 = YELLOW
- 3 = GREEN