

SPECIFICATIONS

CONTACT RATING: 5A @ 120 VAC or 28 VDC
ELECTRICAL LIFE: 50,000 make-and-break cycles at full load
CONTACT RESISTANCE: 10 mOhm max. initial @ 2-4 VDC, 100mA
INSULATION RESISTANCE: 1,000 MOhm min.
DIELECTRIC STRENGTH: 1,500 V RMS @ sea level.
OPERATING TEMPERATURE: -30 deg. C to 85 deg. C

MATERIALS

CASE - diallyl phthalate (DAP)
PLUNGER - Glass filled nylon or glass filled polyester
BUSHING - Brass , nickel plated
HOUSING - Stainless Steel
CONTACT AND TERMINAL - copper alloy, silver plated

How do you build the switches you need!!

The straight type please see the (A) ; The right angle P.C.B termination, please see the (B)

(A) L 8 6 0 1 - C V 1 - 2 - E B R - E - S 2 0

Switches Function		Cap		Cap color	Bushing	Epoxy seal		Vertical support Bracket	
L8601	SPDT on-on	none	(none)	1 white	E Thd /key-way (Std.)	(none)	none seal	(none)	
L8602	DPDT on-on	CV	5.08	2 black	M Non-thd / key-way	E	epoxy seal	S20	11.68
		CV1	7.87	3 red	F Thd / flat			S25	16.00
		CV2	9.53	4 orange	N Non-thd /flat			S35	11.68
		CV4	dress nut	5 yellow				S40	16.00
		F22A	With frame	6 green				V20	snap-in 11.68
				7 blue				V25	snap-in 16.00
				8 brown				V35	snap-in 11.68
				9 gray				V40	snap-in 16.00
					Termination				
					B	solder lug			
					C	P.C 1.27width			
					D	Quick connect			
					D1	wire wrap 19.05			
					Contact Material				
					Q	silver plated			
					R	gold plated			
					G	gold over silver			

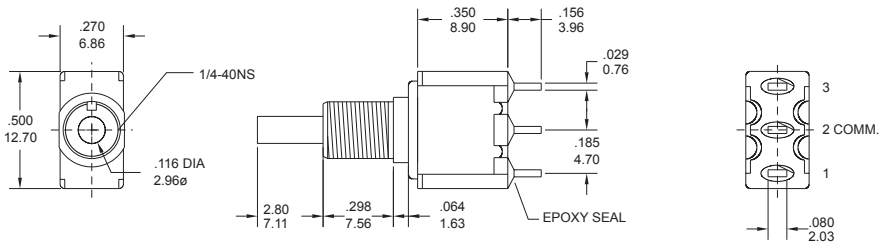
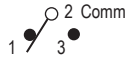
(B) L 8 6 0 1 P - C V 1 - 2 - M R - E

Horizon Right Angle	Vertical Right Angle	Switches Function	Cap		Cap color	Bushing	Epoxy seal	
L8601P	L8601L	SPDT on-on	none	(none)	1 white	M Non thd./ key-way	(none)	none seal
L8602P	L8602L	DPDT on-on	CV	5.08	2 black	N Non Thd / flat	E	epoxy seal
			CV1	7.87	3 red			
			CV2	9.53	4 orange			
					5 yellow			
					6 green			
					7 blue			
					8 brown			
					9 gray			
					Contact Material		Support Bracket type	
					Q	silver plated	(none)	std. straight type
					R	gold plated	S	snap-in type
					G	gold over silver		

SPDT



Model No.	Switching position	
L8601	on	on
Term. Comm.	2-3	2-1

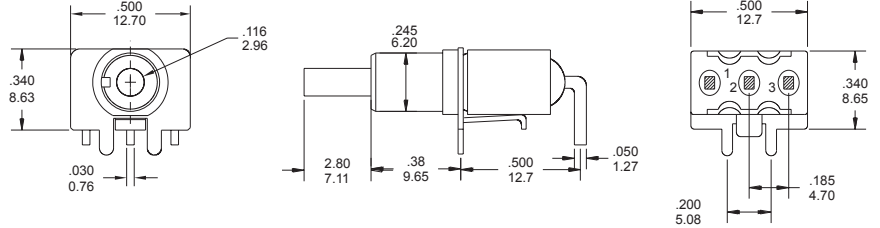
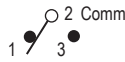


L8601-EBR-E

SPDT



Model No.	Switching position	
L8601P	on	on
Term. Comm.	2-3	2-1

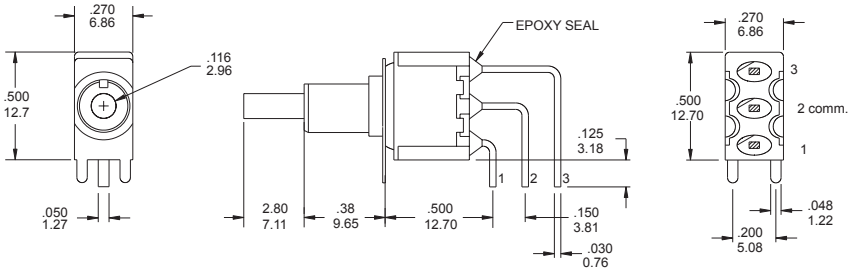


L8601P-MR-E

SPDT



Model No.	Switching position	
L8601L	on	on
Term. Comm.	2-3	2-1



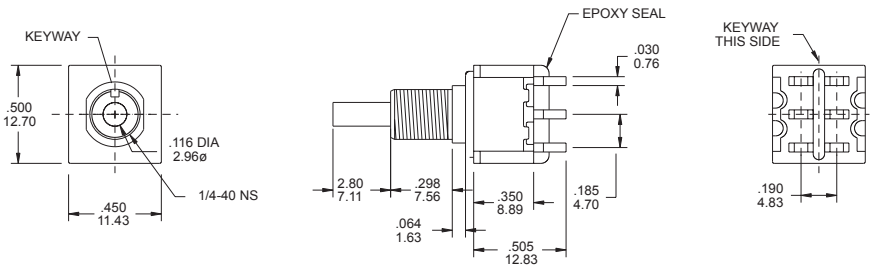
L8601L-MR-E

AVAILABLE SOON

DPDT



Model No.	Switching position	
L8602	on	on
Term. Comm.	2-3 □	2-1 □
	5-6	5-4

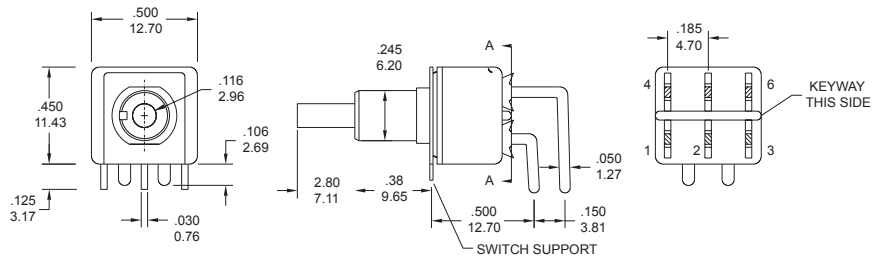


L8602-EBR-E

DPDT



Model No.	Switching position	
L8602P	on	on
Term. Comm.	2-3 □	2-1 □
	5-6	5-4

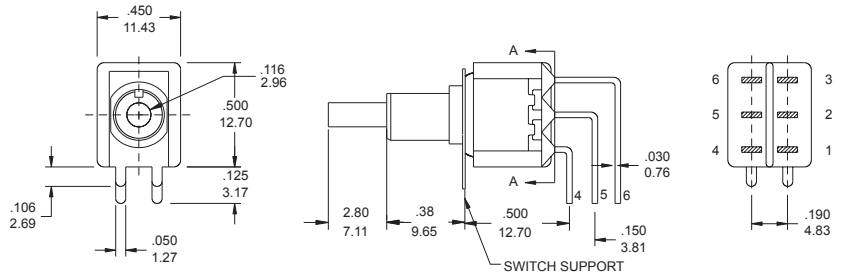


L8602P-MR-E

DPDT



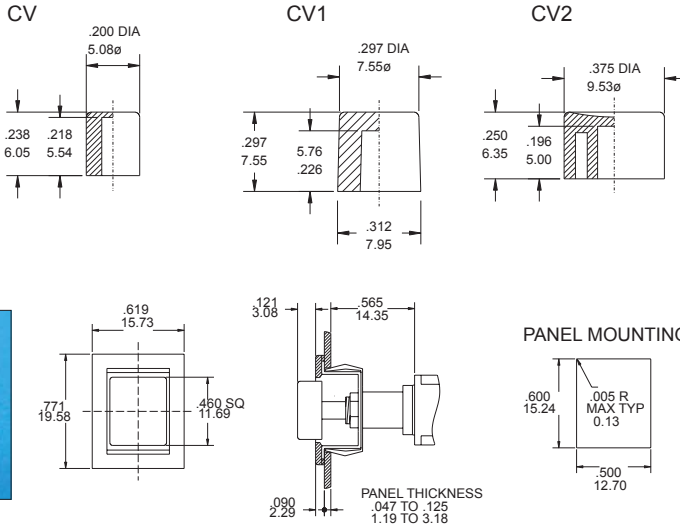
Model No.	Switching position	
P8602L	on	on
Term. Comm.	2-3 □	2-1 □
	5-6	5-4



L8602L-MR-E

Cap Option

Cap color option



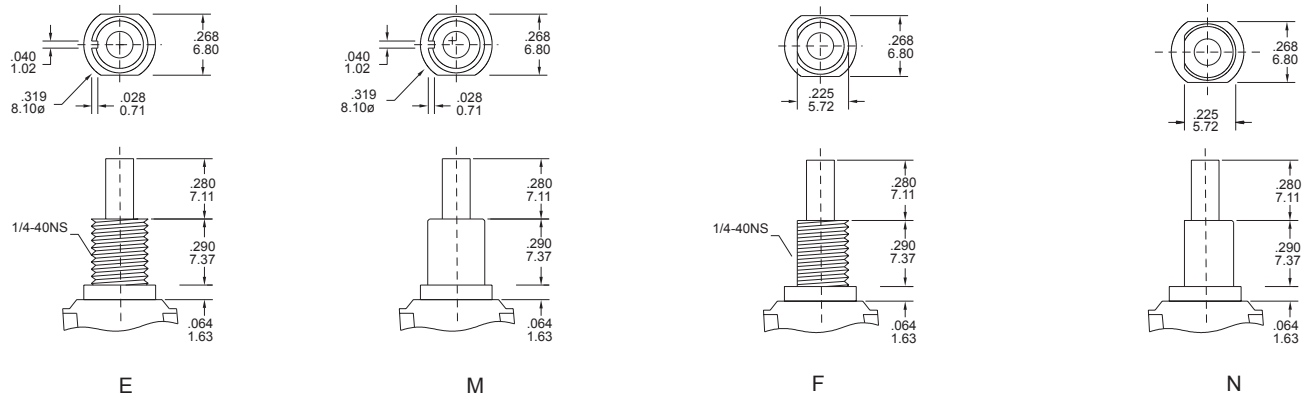
CAP & ACTUATOR OPTIONS	
1	White
2	Black(Std.)
3	Red
4	Orange
5	Yellow
6	Green
7	Blue
8	Brown
9	Gray



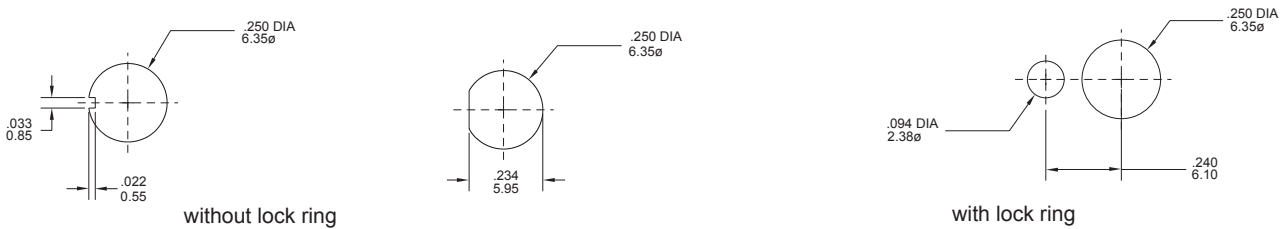
F22A

L860X-F22A-X-BR-E

Bushing Option

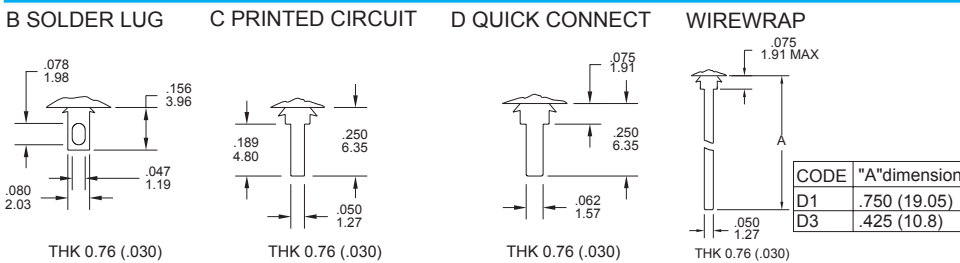


PANEL MOUNTING DIMENSION



TERMINAL OPTION (ONLY FOR THE STRAIGHT TYPE L8601~L8602)

TERMINAL SEAL OPTION



E TERMINAL SEAL



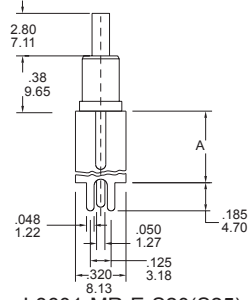
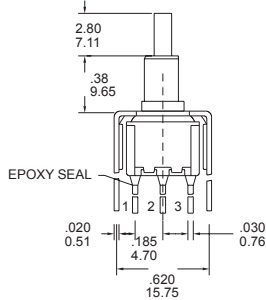
CONTACT MATERIAL OPTIONS

CODE	CONTACT MATERIAL	TERMINAL MATERIAL	RATING
Q	Silver plated	Silver plated	5A @ 120V AC or 28 V DC;
R	Gold plated over nickel plated	Gold plated over nickel plated	0.4 VA MAX @ 20V AC or DC MAX
G	Gold plated over silver plated	Gold plated over silver plated	0.4 VA MAX @ 20 V AC or DC MAX or 5 A @ 120V AC or 28 V DC;

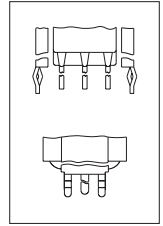
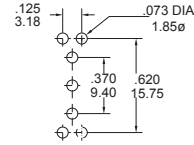
VERTICAL SUPPORT BRACKET OPTION

(only apply the straight type terminal . Please choose the terminal option in "c" code)

option Code	A dimension
S20/V20	.460 11.68
S25/V25	.630 16.00
V20/V25: the snap-in type	

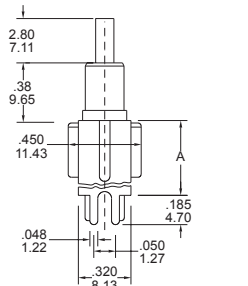
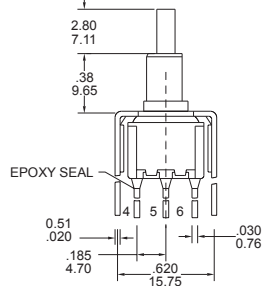


P.C. MOUNTING

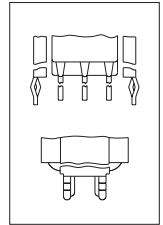
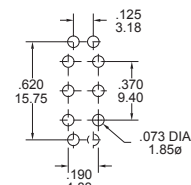


SNAP-IN
V20/ V25

L8601-MR-E-S20(S25)

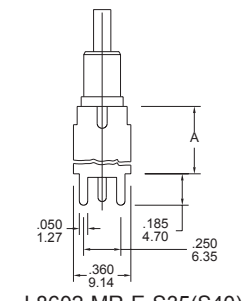
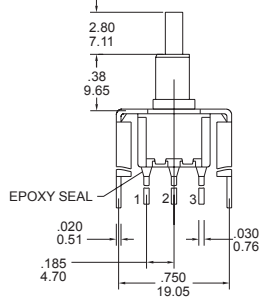


P.C. MOUNTING

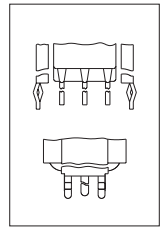
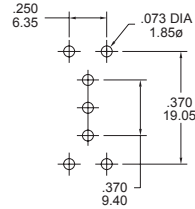


SNAP-IN
V20/ V25

L8601-MR-E-S20(S25)



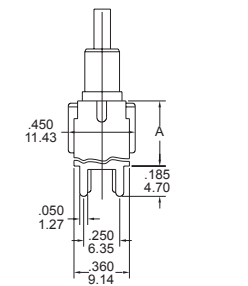
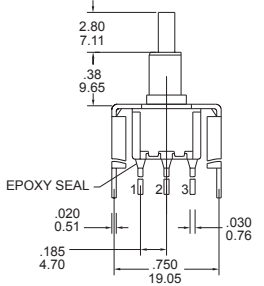
P.C. MOUNTING



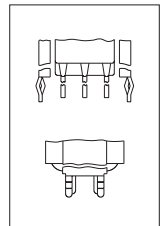
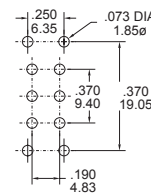
SNAP-IN
V35/ V40

L8602-MR-E-S35(S40)

option Code	A dimension
S35/V35	.460 11.68
S40/V40	.630 16.00
V35/V40 : the snap-in type	



P.C. MOUNTING

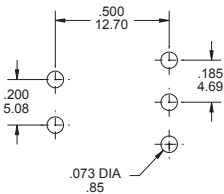


SNAP-IN
V35/ V40

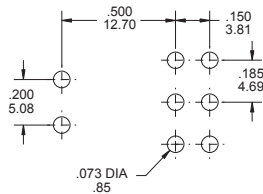
L8602-MR-E-S35(S40)

The P.C.B mounting Dimensions

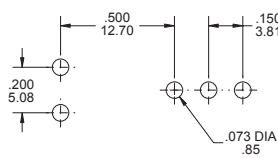
L8601P



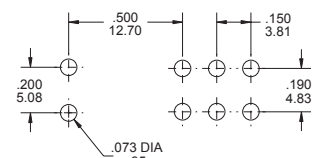
L8602P



L8601L

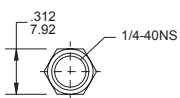


L8602L

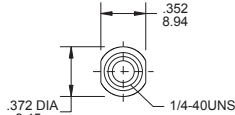


The hard ware of T80-L push button switches

STD.



DRESS NUT



STD.

